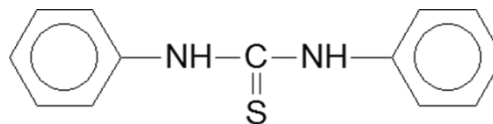


DPTU (Thiourea Accelerator, Corrosion Inhibitor and Stabilizer for PVC* and PVDC*)

*PVC: Polyvinyl chloride; PVDC: Polyvinylidene dichloride

- **DIPHENYL THIOUREA**
- **C₁₃H₁₂N₂S**
- **Molecular Weight: 228**
- **CAS: 102-08-9**
- **EINECS: 203-004-2**
- **REACH: 01-2119980831-31-0000**



PRODUCT	Purity	Melting point (°C) min*	Specific gravity*	Natural color	Remarks
DPTU PD	98	151	1.3	White	Slightly staining, slightly coloring

PD: Non coated powder

*Typical values / ** Depending on natural variation of DPTU

PROPERTIES

Ekaland™ DPTU is a slow curing accelerator very active at low temperatures (1.0-2.5 phr).

Accelerator for CR lattices (0.5-1.0 phr).

It is a secondary accelerator for EPDM with basic accelerators.

It has a strong activator effect.

Zinc oxide is required for a good cure. It provides good ageing properties. It disperses easily in rubber. Slightly coloring and staining. It does not bloom.

It is a corrosion inhibitor and an oxygen scavenger.

It plays a role of thermal stabilizer for manufacturing PVC and PVDC goods.

APPLICATIONS

- General rubber goods: Coated fabric, thick moulded parts, waterbags, retreading, sponge products etc.
- CR adhesives.
- Non rubber: Stabilizer for PVC* and PVDC*, ore flotation.

PACKAGING & STORAGE

Paper bag weight: 15 kg net

Standard CP1 pallet: 300 kg net

Shelf-life: **2 years** in its original packaging

Store in a dry and cool place and away from direct sources of heat or sunlight.

SAFETY & TOXICITY

For detailed information, please refer to our Material Safety Data Sheet.

NITROSAMINE FREE

The information contained in this leaflet is based on tests carried out by our laboratories and data selected from the literature but shall in no event be held to constitute or imply any warranty or undertaking. No liability whatsoever can be accepted with regard to the handling, processing or use of the products concerned, which must in all cases be employed with regard to all relevant regulations and/or legislation in the country or countries concerned.

Issued 11 dated March 2022

TECHNICAL DATA SHEET

MLPC International

209, Avenue Charles Despiau – 40370 Rion des Landes - France

Tel.: +33 (0)5 58 57 02 78 – Contact : commercial@mlpc-intl.com

<http://www.mlpc-intl.com>

ARKEMA

DISCLAIMER FOR MEDICAL DEVICE POLICY

The product described in the brochure is not Medical grade designated for Medical Device applications.

Arkema general Medical Devices Policy

Arkema has implemented an internal Medical Policy regarding the use of Arkema products in Medical Devices applications that are in contact with the body or circulating bodily fluids. Arkema has designated Medical grades to be used for such Medical Device applications. Products that have not been designated as Medical grades are not authorized by Arkema for use in Medical Device applications that are in contact with the body or circulating bodily fluids. In addition, except for limited cases as determined by the Medical Device Policy, Arkema strictly prohibits the use of any Arkema products in Medical Device applications that are implanted in the body or in contact with bodily fluids or tissues for greater than 30 days. For any use of Arkema's product in Medical Device applications, please contact Arkema's sales network.